



ArchInterimHousing

Park Pacific

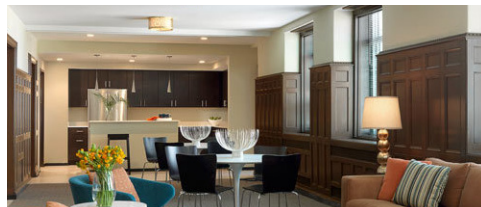
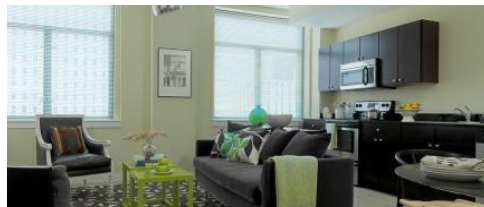
St. Louis, MO 63103

Elevate your lifestyle at Park Pacific, the downtown St. Louis' premier luxury apartment community. From the refurbished brick and masonry on the exquisite Art Deco exterior of what was once the headquarters of the Missouri Pacific Railroad to the unabashed luxury of brand new apartment residences inside, every detail has been thoughtfully planned and carefully executed for the comfort and enjoyment of Park Pacific's residents. With panoramic views of downtown St. Louis, you will love your new fully furnished 1, 2 or 3 bedroom apartment home with unparalleled services with a 24 hour doorman, Wii® room, rooftop wading pool and grilling area and a 2,800 square foot 24 hour fitness center.

IN EVERY APARTMENT

- Signature Series Memory Foam Beds
- Fully Furnished
- 37" Flat Panel TV and DVD Player
- Housewares – Kitchen/ Bath/Bedroom
- High Speed Internet
- All utilities included
- Expanded Cable Service
- Unlimited Local Phone Service
- Washer and Dryer

Temporary Living. Comfortable Lifestyle. St. Louis Corporate Housing



PROPERTY FEATURES

- Business Center/Boardroom
- Café Lounge area
- Fitness Center & Yoga room
- Secured Elevator access/key card entry
- Direct Access Parking Garage
- Package Delivery and holding by the 24/7 doorman
- Rooftop Sundek and Wading pool area

APARTMENT FEATURES

- Brand new renovated interiors
- Granite counter tops
- Maple cabinetry finished in Espresso
- Stainless steel throughout
- Fully equipped kitchen with w/ ceramic cook top
- Wood laminate or terrazzo flooring

LOCATION/DIRECTIONS

- From I-70 East to I-170 South to I-64 East
- Take 14th Street exit and turn left.
- Proceed to Market Street, turn right.
- Proceed two blocks to Tucker Blvd, turn left.
- Proceed three blocks to Olive

866.921.5888 archinterimhousing.com
info@archinterimhousing.com

Our passion is in providing all the comforts of home while you are away on a temporary stay. Our mission is to exceed your expectations.