



ArchInterimHousing

The Laurel

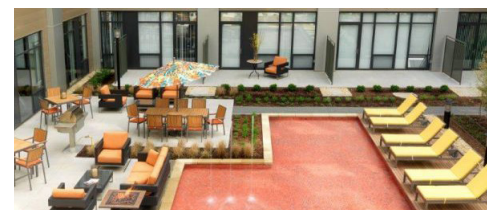
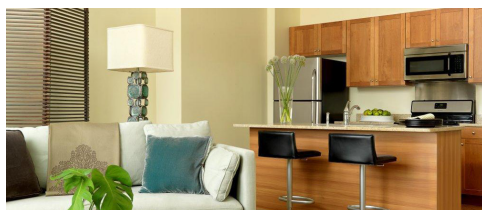
St. Louis, MO 63101

Located in the Mercantile Exchange area in downtown St. Louis with amazing views of the Arch and within walking distance to the grocery store, sporting events, Metro Link, shopping, entertainment and dining! Each Arch Interim Housing apartment offers 10' ceilings, walk-in closets, washer and dryer, stainless steel, granite counter tops, and fully furnished with everything you need to call your apartment home! Community amenities include an indoor dog park, 24 hour doorman, private community garden, gas barbeque grills, private balconies, reflecting and wading pool, in-building garage parking as well as a state of the art fitness center.

IN EVERY APARTMENT

- Signature Series Memory Foam Beds
- Fully Furnished
- 37" Flat Panel TV and DVD Player
- Housewares – Kitchen/ Bath/Bedroom
- High Speed Internet
- All utilities included
- Expanded Cable Service
- Unlimited Local Phone Service
- Washer and Dryer

Temporary Living. Comfortable Lifestyle. St. Louis Corporate Housing



PROPERTY FEATURES

- Resort Style Pool w/Dressing Rooms
- Club House
- Courtyard
- Business Center Onsite
- Covered Lot
- Fitness Center
- Elevator access
- Garage
- Controlled Gate Access

APARTMENT FEATURES

- Spacious closets
- Balcony
- Garden Tub
- Hardwood Flooring
- Island Kitchens
- Loft Layout
- New/Renovated Interior
- Stainless Steel Appliances

LOCATION/DIRECTIONS

- From highway 40/64
- Take the 11th St exit, EXIT 39C, toward the Stadium.
- Stay straight to go onto S 11th St.
- Take the 1st right onto Clark Ave.
- Turn left onto Stadium Plz.
- Stadium Plz is just past S 9th St
- Stadium Plz becomes N 7th St.
- 622 N 7TH ST is on the right.